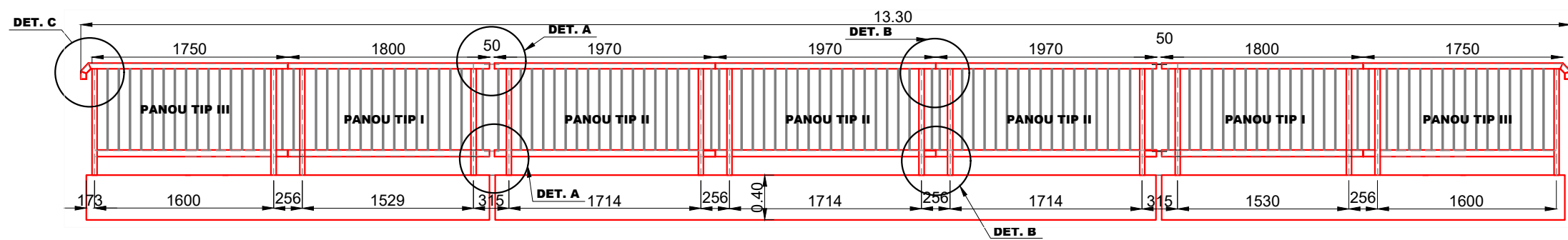
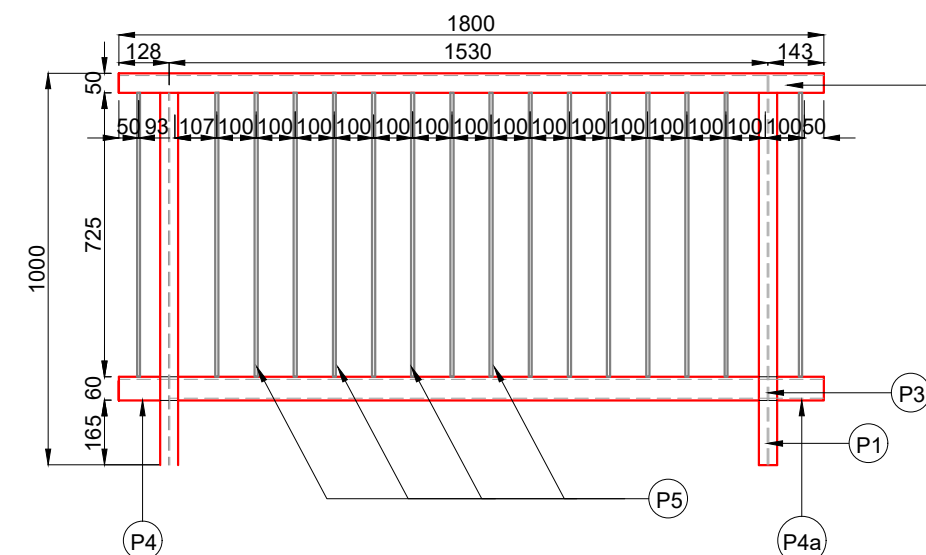


DISPOZITIE GENERALA PARAPET PIETONAL

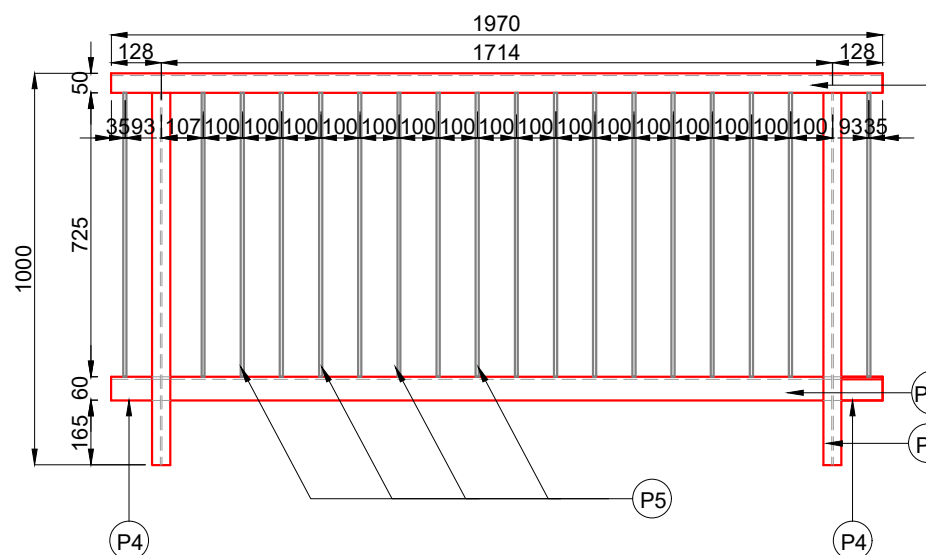
Sc. 1:50



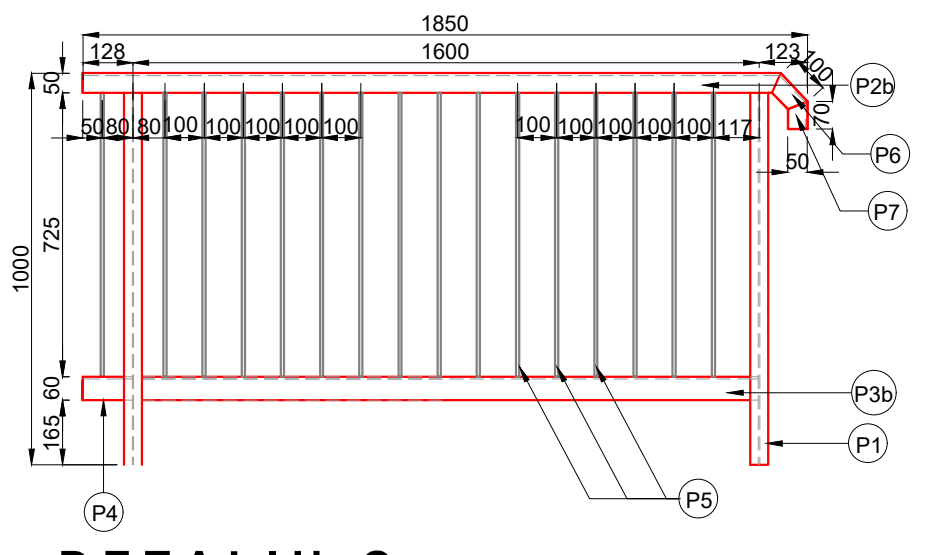
PANOU-TIP I



PANOU-TIP II

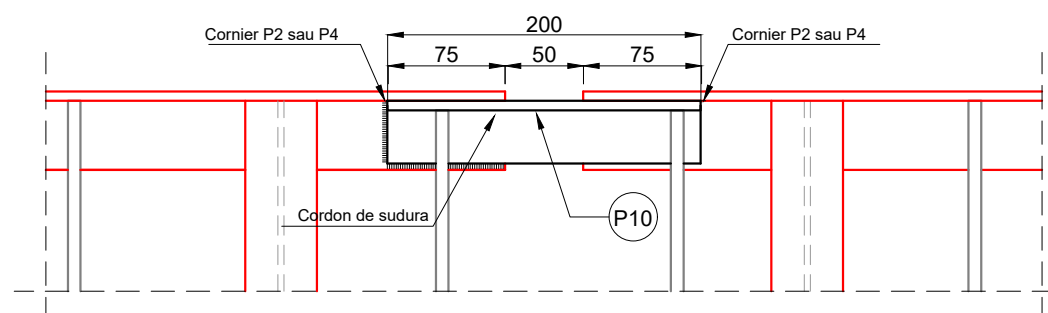


PANOU-TIP III



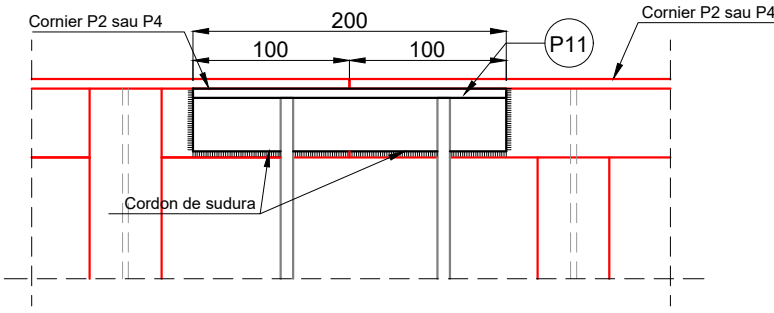
DETALIU A

Sc. 1:5

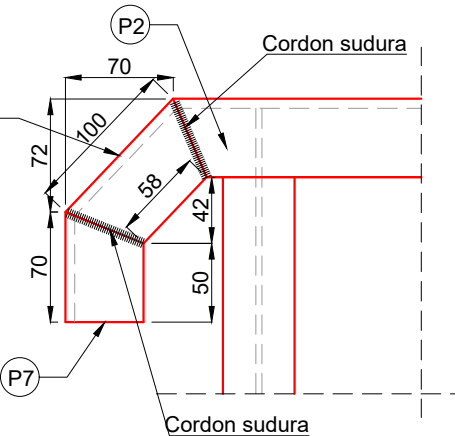


DETALIU B

Sc. 1:5

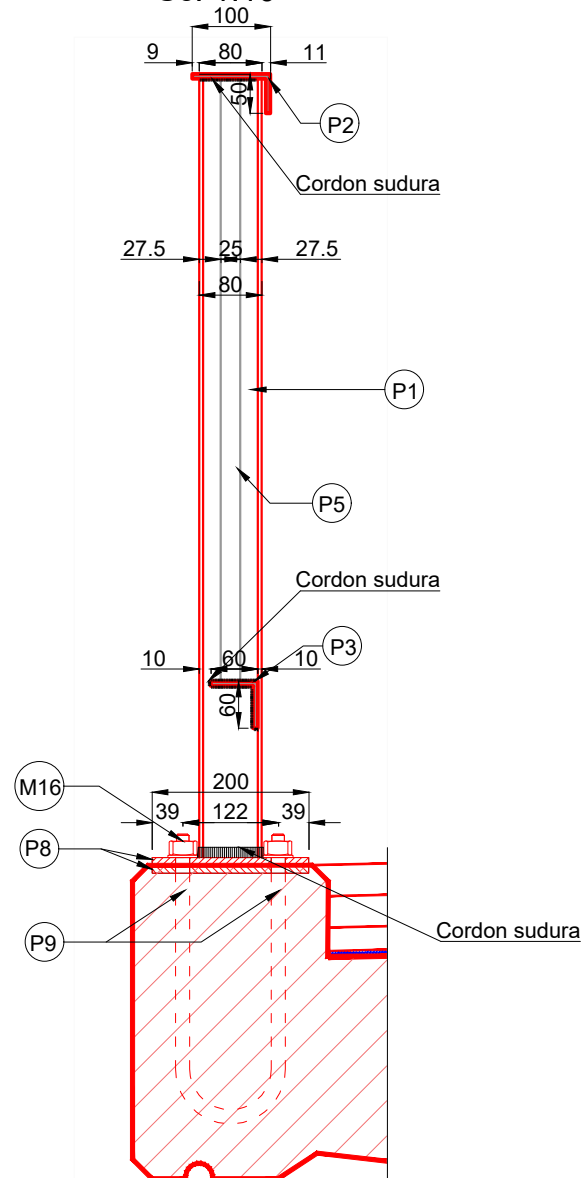


DETALIU C



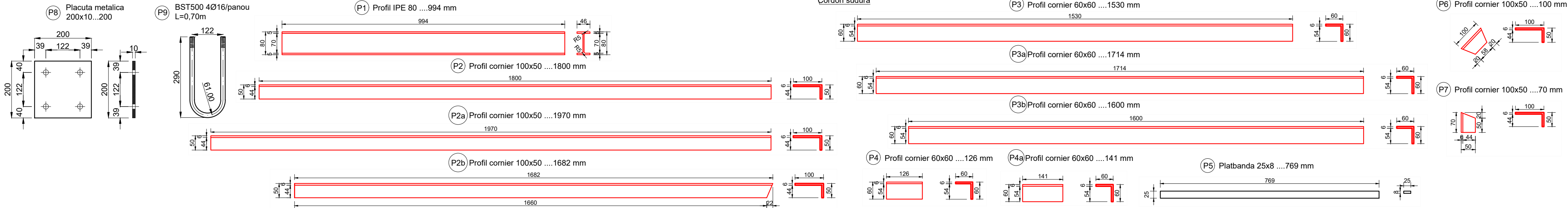
SECTIUNE TRANSVERSALA

Sc. 1:10



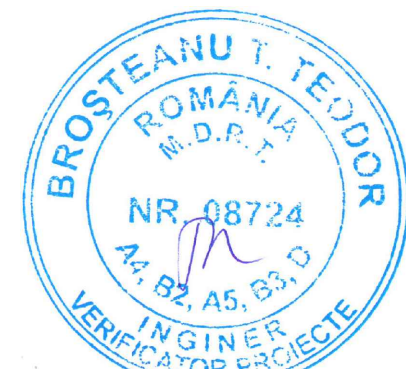
		MASURATOAREA MATERIALULUI METALIC S235						
		PIESA	SECTIUNE	Kg/m	LUNGIME	KG/BUC	NR.BUC.	GREUTATE
PANOU TIP I	P1	PROFILPE 80	6.2	0.994	6.16	2		12.33
	P2	Cornier 100x50x6	6.84	1.800	12.31	1		12.31
	P3	Cornier 60x60x6	5.42	1.530	8.29	1		8.29
	P4	Cornier 60x60x6	5.42	0.126	0.68	1		0.68
	P4a	Cornier 60x60x6	5.42	0.141	0.76	1		0.76
	P5	Pb 769x25x8	1.56	0.769	1.20	18		21.59
TOTAL GREUTATE PANOU TIP I (Kg)								55.97
PANOU TIP II	P1	PROFILPE 80	6.2	0.994	6.16	2		12.33
	P2a	Cornier 100x50x6	6.84	1.970	13.47	1		13.47
	P3a	Cornier 60x60x6	5.42	1.714	9.27	1		9.27
	P4	Cornier 60x60x6	5.42	0.126	0.68	2		1.37
	P5	Pb 769x25x8	1.56	0.769	1.20	20		23.99
TOTAL GREUTATE PANOU TIP II (Kg)								60.43
PANOU TIP III	P1	PROFILPE 80	6.2	0.994	6.16	2		12.33
	P2b	Cornier 100x50x6	6.84	1.682	11.50	1		11.50
	P3b	Cornier 60x60x6	5.42	1.60	8.67	1		8.67
	P4	Cornier 60x60x6	5.42	0.141	0.76	1		0.76
	P5	Pb 725x25x8	1.56	0.769	1.20	18		21.59
	P6	Cornier 100x50x6	6.84	0.1	0.68	1		0.68
	P7	Cornier 100x50x6	6.84	0.07	0.48	1		0.48
TOTAL GREUTATE PANOU TIP III (Kg)								56.02
MATERIALE DE PRINDERE		Placa metalica 200x200x20	31.2	0.200	6.24	28		174.72
	P8	Tija filetata M16	1.578	0.700	1.10	56		61.86
	P10	Cornier 60x40x6	4.46	0.200	0.89	8		7.14
	P11	Cornier 60x40x6	4.46	0.200	0.89	12		10.70
	Materiale de prindere (saibe, piulite) -112 buc							50.88
	TOTAL GREUTATE MATERIALE DE PRINDERE (Kg)							305.30

PIESA	Greutate pe buc.	Nr. buc	Total greutate
Panou tip I	55.97	4	224
Panou tip II	60.43	6	363
Panou tip III	56.02	4	224
Materiale de prindere			305
Material marunt + sudura 5%			56
TOTAL GREUTATE PARAPET PIETONAL (Kg)			1172



NOTA

- Orice modificare a prevederilor prezentei planse se face numai cu acordul scris al proiectantului.
- Orice neconcordanta intre prevederile prezentei planse si situatia din amplasamentul podului, se va aduce imediat la cunostinta proiectantului.
- Protectia anticoroziva se va realiza prin zincare termica.



BENEFICIAR:



C.N.A.I.R. S.A. BUCURESTI
DIRECTIA REGIONALA DE DRUMURI SI
PODURI IASI

PROIECTANT:

S.C. POD-PROIECT S.R.L.
Iasi, str. Plopii fara soț nr. 3
Romania, jud. Iasi
RO 14447212
www.pod-proiect.ro

DENUMIRE PROIECT:

REPARATII CURENTE POD
PE DN 12A, KM 85+300

FAZA: P.Th. + D.D.E. + C.S.

SEF PROIECT

ing. Marius GHEBAC

DESENAT

ing. Marius GHEBAC

VERIFICAT INTERN

ing. Ilie-Bogdan HRITCU

DENUMIRE PLANSA

DETALIU PARAPET
METALIC PIETONAL

Contract nr. 177 din 01.07.2019

Revizia nr.: rev.01

Scara: 1:5, 1:10, 1:20, 1:50

Data: 2019

Nr. Plansa Cod15/ Pth/ - 10